

NALP4 Antibody
Catalog # ASC11193**Specification**

NALP4 Antibody - Product Information

Application	WB, E
Primary Accession	Q96MN2
Other Accession	AAL35293 , 17064172
Reactivity	Human, Mouse
Host	Rabbit
Clonality	Polyclonal
Isotype	IgG
Application Notes	NALP4 antibody can be used for detection of NALP4 by Western blot at 1 µg/mL.

NALP4 Antibody - Additional Information

Gene ID	147945
Target/Specificity	
NLRP4;	

Reconstitution & Storage

NALP4 antibody can be stored at 4°C for three months and -20°C, stable for up to one year. As with all antibodies care should be taken to avoid repeated freeze thaw cycles. Antibodies should not be exposed to prolonged high temperatures.

Precautions

NALP4 Antibody is for research use only and not for use in diagnostic or therapeutic procedures.

NALP4 Antibody - Protein Information

Name NLRP4 ([HGNC:22943](#))

Function

May be involved in inflammation and recognition of cytosolic pathogen-associated molecular patterns (PAMPs) not intercepted by membrane-bound receptors. Acts as a negative regulator of the type I interferon signaling pathway by serving as an adapter to promote DTX4- mediated ubiquitination of activated TBK1, and its subsequent degradation. Suppresses NF-kappaB induction by the cytokines TNFA and IL1B, suggesting that it operates at a point of convergence in these two cytokine signaling pathways.

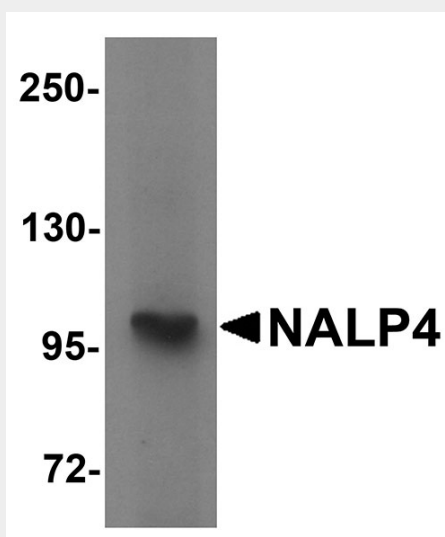
NALP4 Antibody - Protocols

Provided below are standard protocols that you may find useful for product applications.

- [Western Blot](#)

- [Blocking Peptides](#)
- [Dot Blot](#)
- [Immunohistochemistry](#)
- [Immunofluorescence](#)
- [Immunoprecipitation](#)
- [Flow Cytometry](#)
- [Cell Culture](#)

NALP4 Antibody - Images



Western blot analysis of NALP4 in K562 cell lysate with NALP4 antibody at 1 µg/mL.

NALP4 Antibody - Background

NALP4 Antibody: NALP proteins include the apoptosis regulator APAF1 (apoptotic protease activating factor 1) and mammalian NOD-LRR proteins and are thought to be involved in inflammation and reproduction. NALP4, also known as PYRIN-containing APAF1-like protein 4, has a C-terminal leucine-rich repeat (LRR) region, an N-terminal Pyrin domain (PYD) followed by a NACHT domain, and a NACHT-associated domain. In transfected 293 cells, NALP4 suppressed NF-κB induction by TNF-α and IL-1β, suggesting NALP4 operates at a point of convergence in these two signaling pathways. NALP4 also suppressed NF-κB induction resulting from overexpression of several adapter proteins and protein kinases involved in these pathways, including TRAF2, TRAF6, RIP, and IRAK2, as well as the IKK-alpha and IKK-beta, suggesting that NALP4 is critical in modulating NF-κB activity.

NALP4 Antibody - References

Tschopp J, Martinon F, and Burns K. NALPs: a novel protein family involved in inflammation. *Nat. Rev. Mol. Cell Biol.*2003; 4:95-104.
Tian X, Pascal G, and Monget P. Evolution and functional divergence of NLRP genes in mammalian reproductive system. *BMC Evol. Biol.*2009; 9:202.
Fiortino L, Stehlik C, Oliveira V, et al. A novel PAAD-containing protein that modulates NF-kappa B induction by cytokines tumor necrosis factor-alpha and interleukin-1beta. *J. Biol. Chem.*2002; 277:35333-40.